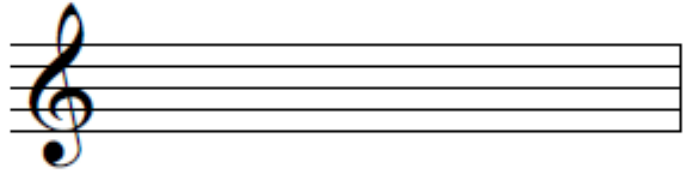


## THE NOTE C - FROM THE BOTTOM

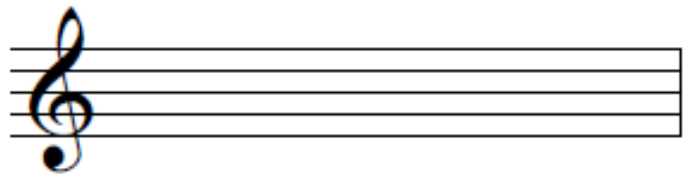
C is on its own line under the stave. Have a go at drawing C in the bar below:



When the note is coloured in black it means

Have a go at drawing a 1 beat C below:

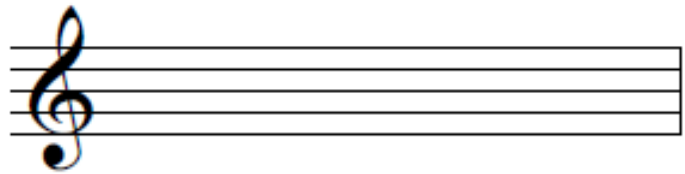
it is 1 beat long. It looks like this:



When the note is white it means it is 2 beats

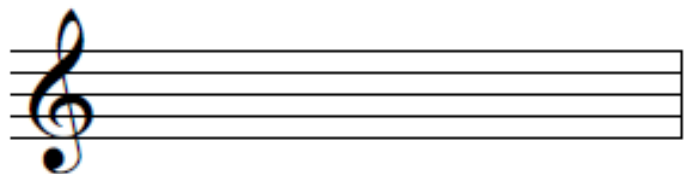
Have a go at drawing a 2 beat C below:

long. It looks like this:



This shape means rest for 1 beat.

Try drawing a 1 beat rest below:



Here is an empty barline. Using the rhythms below, draw the note C on the staff:

