

Gradd 2 – Scales ac Arpeggios

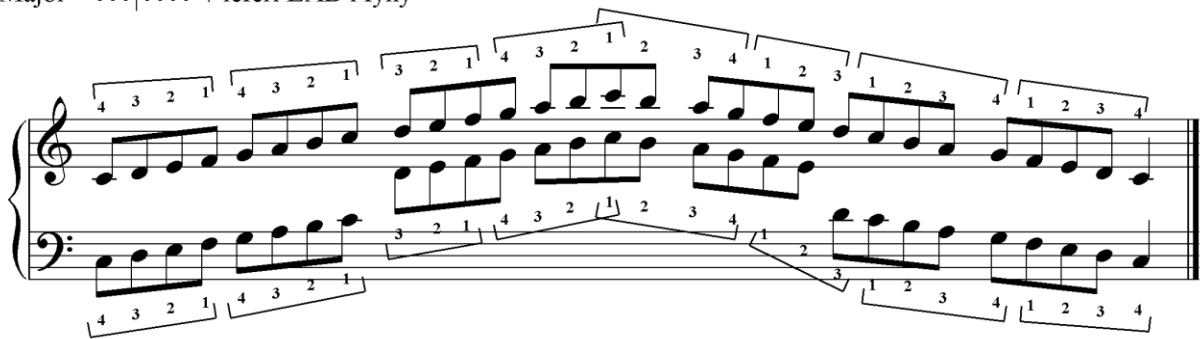
Scales

2 octef , naill ai dwylo gyda’i gilydd neu ar wahan.

Y byseddu i bob scale-

4321 4321 321 4321234 123 1234 1234

C Major - +++|+++ / leferi EAB i fyny



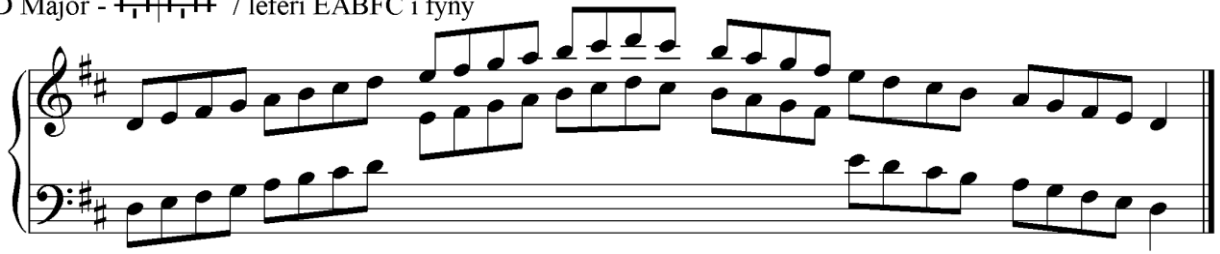
Musical notation for C Major scale, 2 octaves. The notation shows the treble and bass clefs with notes and fingering numbers (1-4) above and below the notes. The scale is written in a single line with a grand staff bracket.

G Major - +++|+++ / leferi EABF i fyny



Musical notation for G Major scale, 2 octaves. The notation shows the treble and bass clefs with notes and a sharp sign for F# in the treble clef. The scale is written in a single line with a grand staff bracket.

D Major - +1+1+1+ / leferi EABFC i fyny



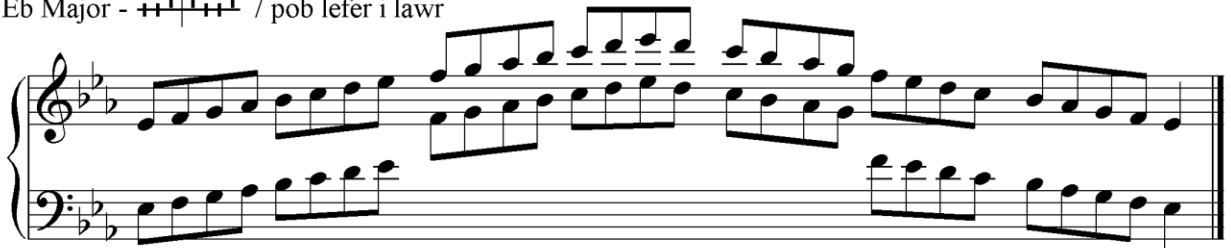
Musical score for D Major, featuring a treble and bass clef. The key signature has two sharps (F# and C#). The melody is written in the treble clef, and the accompaniment is in the bass clef. The piece concludes with a double bar line.

Bb Major - ++1+1+1+ / leferi A i fyny



Musical score for Bb Major, featuring a treble and bass clef. The key signature has two flats (Bb and Eb). The melody is written in the treble clef, and the accompaniment is in the bass clef. The piece concludes with a double bar line.

Eb Major - ++1+1+1+ / pob lefer i lawr



Musical score for Eb Major, featuring a treble and bass clef. The key signature has three flats (Bb, Eb, and Ab). The melody is written in the treble clef, and the accompaniment is in the bass clef. The piece concludes with a double bar line.

C Minor - ++1+1+1+ / lefer B i fyny



Musical score for C Minor, featuring a treble and bass clef. The key signature has three flats (Bb, Eb, and Ab). The melody is written in the treble clef, and the accompaniment is in the bass clef. The piece concludes with a double bar line.

G Minor - ++|+|++ / leferi AF i fyny

Arpeggios- 1

2 octef , naill ai dwylo gyda'i gilydd neu ar wahan.

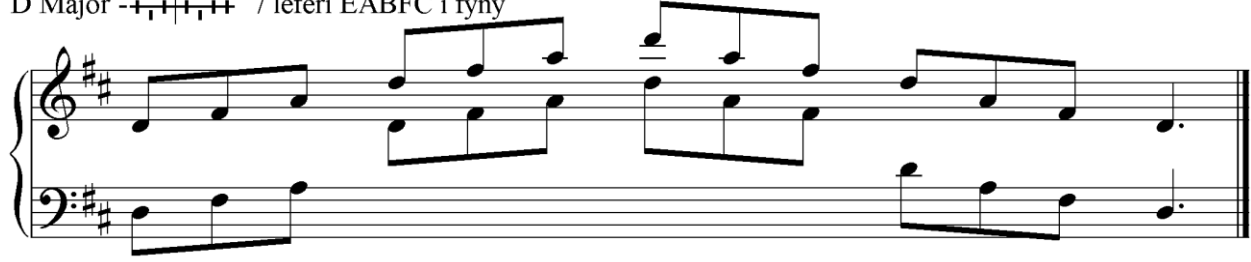
Y byseddu i bob arpeggio-

4321 32123 1234

C Major - +++|++++ / leferi EAB i fyny

G Major - +++|+|++ / leferi EABF i fyny

D Major --+|+|+|+ / leferi EABFC i fyny



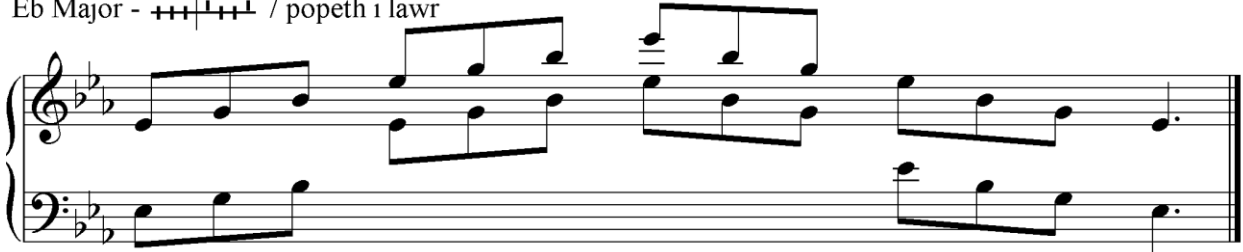
Musical score for D Major, featuring a treble and bass clef. The key signature has two sharps (F# and C#). The melody in the treble clef consists of quarter notes: D4, E4, F#4, G4, A4, B4, C#5, D5. The bass clef accompaniment consists of quarter notes: D3, F#3, A3, B3, C#4, D4. The piece concludes with a double bar line.

Bb Major - ++|+|+ / lefer A i fyny



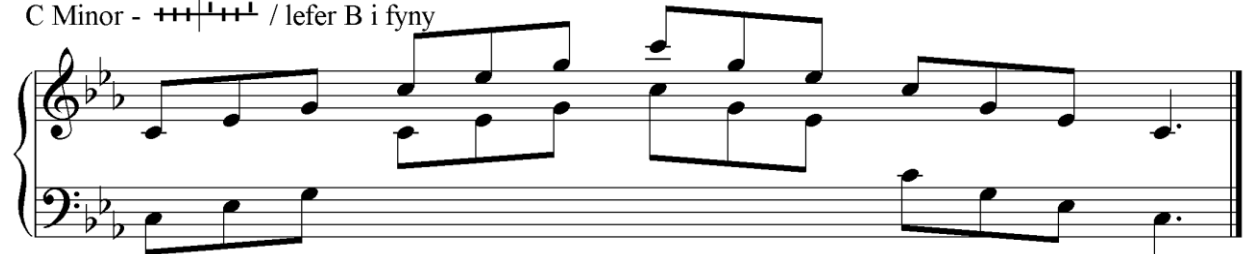
Musical score for Bb Major, featuring a treble and bass clef. The key signature has two flats (Bb and Eb). The melody in the treble clef consists of quarter notes: Bb4, C5, D5, Eb5, F5, G5, Ab5, Bb5. The bass clef accompaniment consists of quarter notes: Bb3, Eb3, F3, G3, Ab3, Bb3. The piece concludes with a double bar line.

Eb Major - +++|+|+ / popeth i lawr



Musical score for Eb Major, featuring a treble and bass clef. The key signature has three flats (Bb, Eb, and Ab). The melody in the treble clef consists of quarter notes: Eb4, F4, G4, Ab4, Bb4, C5, D5, Eb5. The bass clef accompaniment consists of quarter notes: Eb3, Ab3, Bb3, C4, D4, Eb4. The piece concludes with a double bar line.

C Minor - +++|+|+ / lefer B i fyny



Musical score for C Minor, featuring a treble and bass clef. The key signature has three flats (Bb, Eb, and Ab). The melody in the treble clef consists of quarter notes: C4, D4, Eb4, F4, G4, Ab4, Bb4, C5. The bass clef accompaniment consists of quarter notes: C3, Eb3, F3, G3, Ab3, C4. The piece concludes with a double bar line.

G Minor - ++|+|++ / leferi AF i fyny



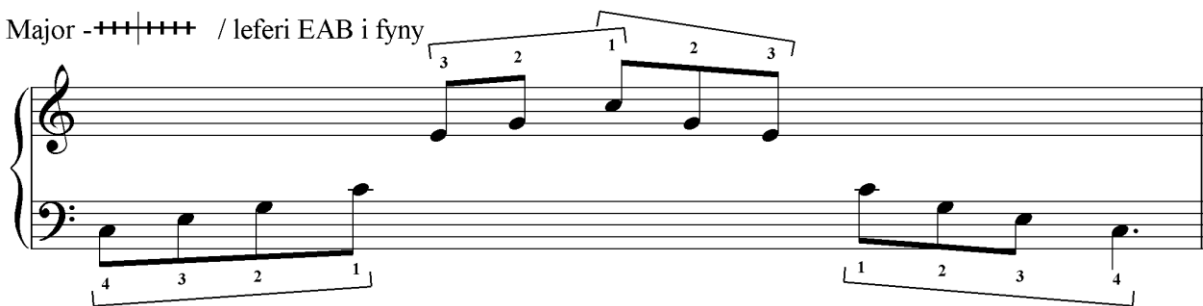
Arpeggios- 2

Wedi rhannu rhwng y dwylo.

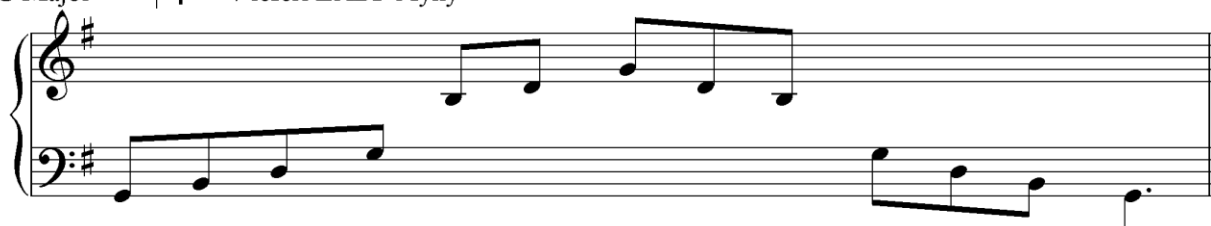
Y byseddu i bob arpeggio-

ll.ch-4321, ll.dde- 32123, ll.ch-1234.

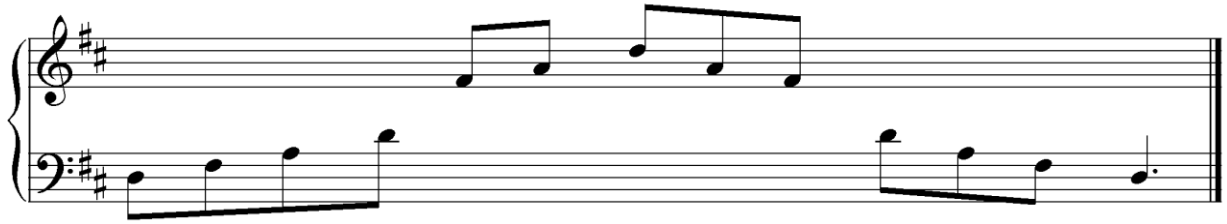
C Major - +++|+++ / leferi EAB i fyny



G Major - +++|+|++ / leferi EABF i fyny



D Major - +1+|1++ / leferi EABFC i fyny



Musical notation for D Major, showing a treble and bass clef staff with a key signature of two sharps (F# and C#). The melody in the treble clef consists of quarter notes: D4, E4, F#4, G4, A4, B4, C5. The bass line consists of quarter notes: D3, E3, F#3, G3, A3, B3, C4.

Bb Major - ++1|1+++ / lefer A i fyny



Musical notation for Bb Major, showing a treble and bass clef staff with a key signature of two flats (Bb and Eb). The melody in the treble clef consists of quarter notes: Bb3, C4, D4, Eb4, F4, G4, A4. The bass line consists of quarter notes: Bb2, C3, D3, Eb3, F3, G3, A3.

Eb Major - ++1|1++1 / popeth i lawr



Musical notation for Eb Major, showing a treble and bass clef staff with a key signature of three flats (Bb, Eb, and Ab). The melody in the treble clef consists of quarter notes: Eb3, F3, G3, Ab3, Bb3, C4, D4. The bass line consists of quarter notes: Eb2, F2, G2, Ab2, Bb2, C3, D3.

C Minor - +++|1++1 / lefer B i fyny



Musical notation for C Minor, showing a treble and bass clef staff with a key signature of three flats (Bb, Eb, and Ab). The melody in the treble clef consists of quarter notes: C4, D4, Eb4, F4, G4, Ab4, Bb4. The bass line consists of quarter notes: C3, D3, Eb3, F3, G3, Ab3, Bb3.

G Minor - ++|+|++ / lefer AF i fyny

The image shows a musical score for G Minor, consisting of two staves: a treble staff and a bass staff. The key signature is G minor, indicated by two flats (Bb and Eb). The treble staff begins with a treble clef and a key signature of two flats. The notes in the treble staff are G4, A4, Bb4, C5, Bb4, A4, G4. The bass staff begins with a bass clef and a key signature of two flats. The notes in the bass staff are G3, A3, Bb3, C4, Bb3, A3, G3. The piece concludes with a double bar line.